



# Print2DMS

Install & configuration

**Date: 3-5-2019**

Reference: 40168

Versie: 0.1

Status: In review

Author(s): Erik Meegdes

**Hyarchis Content Services**

Daalakkersweg 2-108

5641 JA Eindhoven

The Netherlands

Phone: +31 – 88 – 007 85 00

**1 CONTENTS**

1 Contents ..... 2

2 Introduction..... 3

3 Installation..... 4

4 Configuration..... 6

    4.1 Print2DMS location ..... 6

    4.2 Hyarchis application location ..... 7

    4.3 Temp folder ..... 7

    4.4 Temp folder cleanup ..... 7

    4.5 Conversion/print logging..... 7

5 Usage..... 8

## 2 INTRODUCTION

For the documents that are created from the Microsoft Office programs, Hyarchis Document Management knows the MS Office integration. Our consultants are regularly asked whether it is also possible to easily add documents from other software applications to the archive and / or customer file by the user.

The answer is from now on: yes, you can!

New in Hyarchis Document Management: Hyarchis Print2DMS

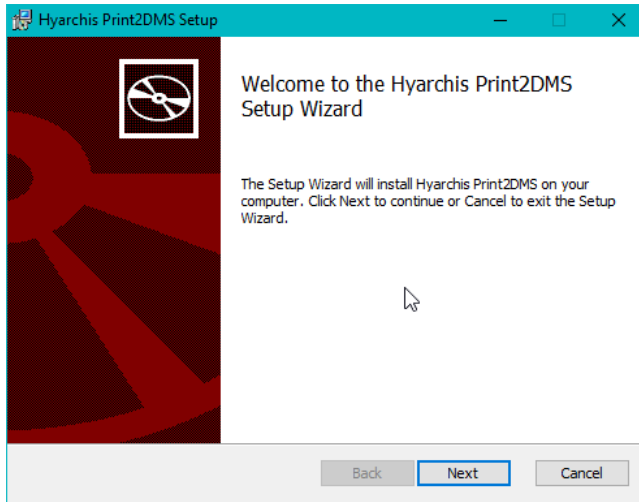
With the Hyarchis Print2DMS function, users can very easily choose to store a document from any application into Hyarchis Document Management system once the Hyarchis Print2DMS function is installed instead of printing the document on paper.

The user chooses a printer and that prints PDF document and starts the storage process in your Hyarchis system.

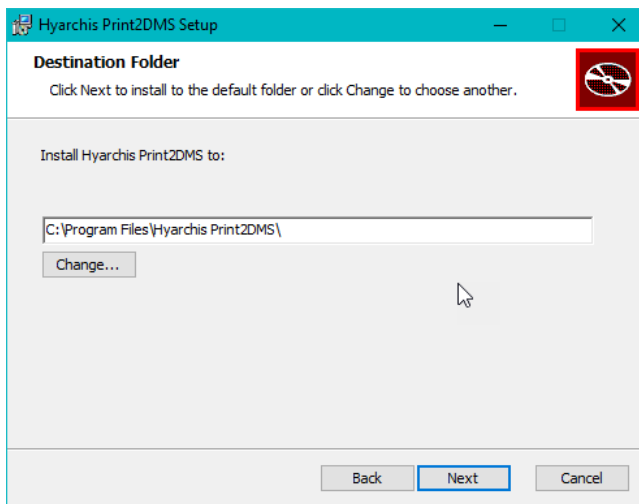
### 3 INSTALLATION

The installation process is described in this chapter in small steps.

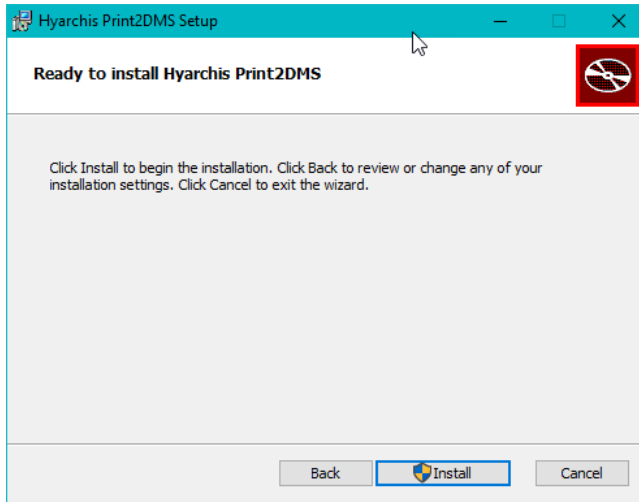
1. Start the setup process with double clicking the file **VPDInstaller.x64.msi**



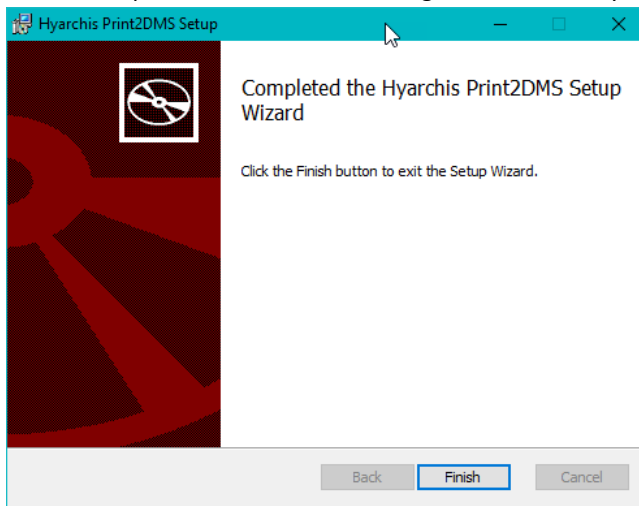
2. Press **Next** to continue



3. When desired, an alternative location can be entered by pressing the **Change** button. Press **Next** to continue to the next installation step.



4. Press the **Install** button to start the installation of files and registry keys. Please confirm during the installation process that files and changes are allowed by the installer application.



5. Click **Finish** to close the installation


## 4 CONFIGURATION

After installation some configuration steps may have to be taken on each system the Print2DMS application is installed.

Some settings should be set using the Properties application this application is in the folder where the Print2DMS application is installed.

Other settings are to be set by updating the appsettings.json file, this file is in the Print2HDM subfolder in the Print2DMS folder.

Below the default values in the application.json file (also displayed in the properties application)

Appsettings.json <sup>1</sup>	Properties
<pre> {   "HDM": {     "Path": "C:\\Program Files (x86)\\VDD\\Hyarchis.NET\\Hyarchis Client\\Hyarchis.exe"   },   "ConvertFormat": "PDF",   "HoursToStoreFilesInOutputFolder": 2,   "Serilog": {     "MinimumLevel": {       "Default": "Debug",       "Override": {         "Microsoft": "Warning"       }     },     "WriteTo": [       {         "Name": "File",         "Args": {           "path": "Print2HDMLogs.txt",           "rollingInterval": "Day"         }       }     ]   } } </pre>	

### 4.1 PRINT2DMS LOCATION

The Print2DMS location reference is set in the properties.exe application on the application tab. The reference must point to the Hyarchis.Print2HDM.exe file. The location will be set by the installation application.

<sup>1</sup> Application.json is located (by default) in C:\Program Files\Hyarchis Print2DMS\Print2HDM

## 4.2 HYARCHIS APPLICATION LOCATION



**This reference must be checked.**

In the appsettings.json file the default installation location for the Hyarchis Tray application will be set, as shown in the table above. When the Hyarchis Tray application is installed on another location, the refence must be updated to the proper location.



**use double \\ in the path notation.**

## 4.3 TEMP FOLDER

By default, the files produced by the Print2DMS application will be temporarily stored in the location mentioned on the Converter tab in the properties.exe application.



**Make sure that the users have change permissions on this folder location.**

## 4.4 TEMP FOLDER CLEANUP

The files in the temp folder (as defined in the previous paragraph) will be removed when a new file is 'printed', when a file is older than 2 hours (default setting in the appsettings.json file) it will be removed from the temp folder.

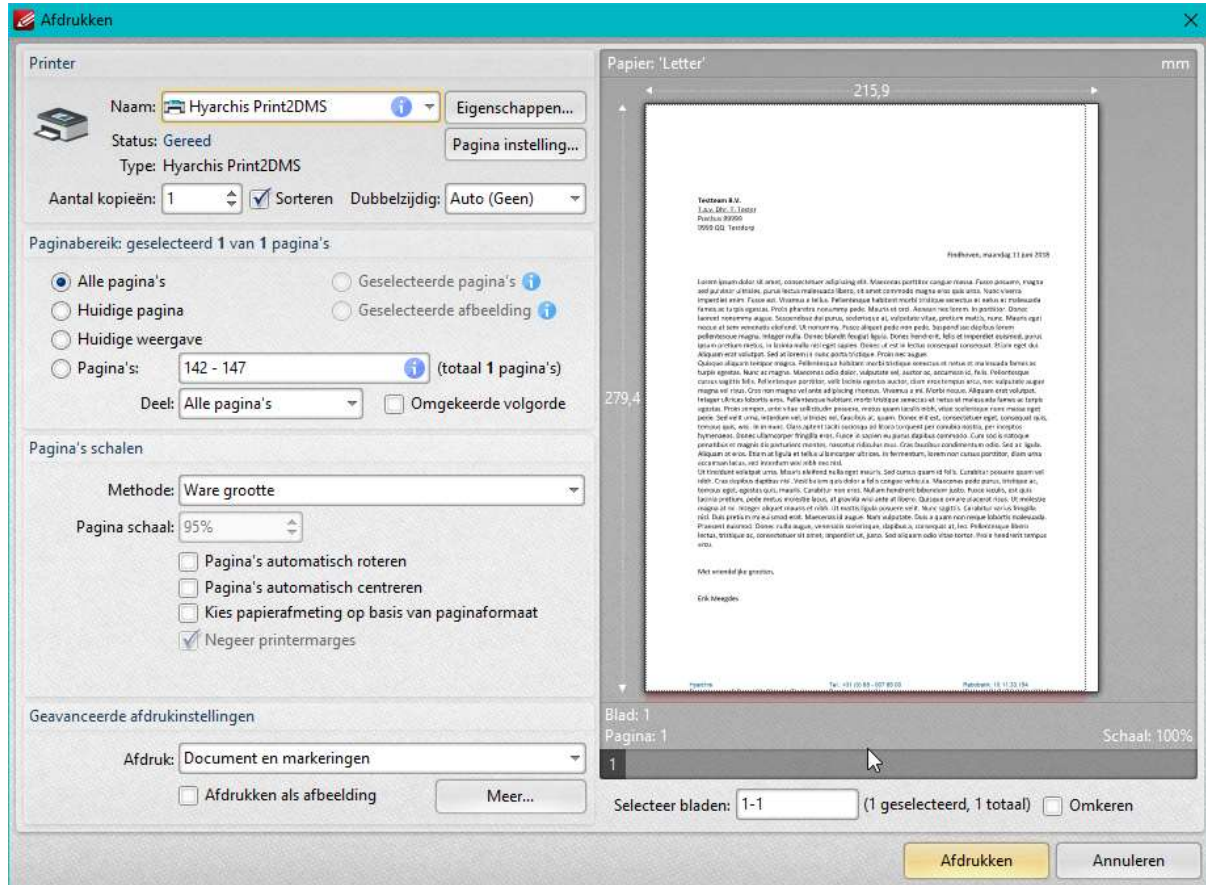
This cleanup regime can be updated to your standards.

## 4.5 CONVERSION/PRINT LOGGING

The Hyarchis Print2DMS application will write a logfile of actions taken, the definition and location of this logfile are set in the appsettings.json file. The file is by default written into the application folder.

5 USAGE

The Hyarchis Print2DMS application appears as a new printer within applications. So, in order to store a document in Hyarchis Document Management, open a document and activate the print option in that application.



Select the Hyarchis Print2DMS printer and press the Print button!

A small progress bar is shown in the righthand corner of the screen (if enabled in the properties.exe). Once the PDF is created, the PDF is passed on to the Hyarchis.exe (Tray application). This will result in a save window on screen, the user can insert / update / select the meta data for this document and press Save.

The document is now stored in HDM.